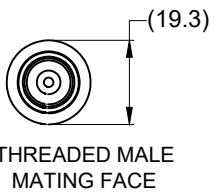
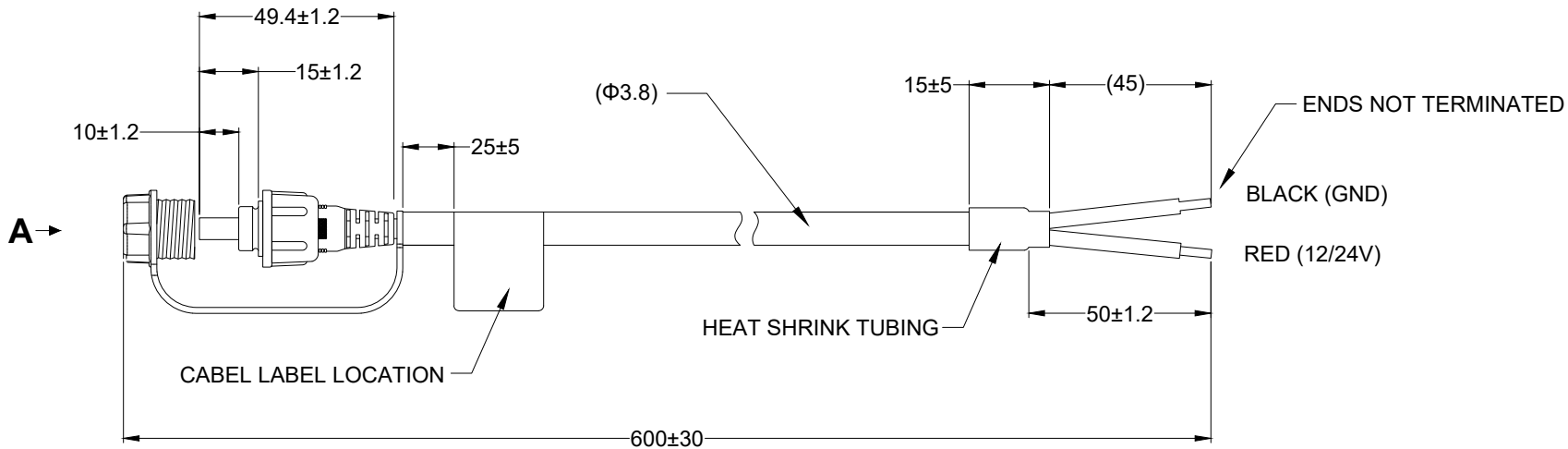


Revision Notes.				
APA:	Drawn:	Checked:	Approved:	Date:

**VIEW A**



PIN #	DESCRIPTION	FUNCTION
1	CORE	12/24V
2	SHELL	GND



- NOTES:**
4. END USER ONLY: ENSURE DUST CAP IS FITTED TO CONNECTOR (VIEW A) WHEN NOT IN USE.
  5. FOR LABEL AND PACKAGING DETAILS REFER TO MASTER BOM.
  6. ANY CUSTOMER MODIFICATION OF THIS PRODUCT CAUSING SUBSEQUENT FAILURE IS NOT A LIABILITY OF BRIGADE ELECTRONICS GROUP PLC.

**PROPRIETARY NOTICE**  
 THIS DESIGN AND TECHNICAL INFORMATION APPEARING ON THIS DRAWING IS THE PROPERTY OF BRIGADE ELECTRONICS, AND IS DISCLOSED IN CONFIDENCE. IT IS NOT TO BE COPIED, REPRODUCED, REVEALED TO OR EXPROPRIATED BY OTHERS, EITHER IN WHOLE OR IN PART WITHOUT THE EXPRESS WRITTEN CONSENT OF BRIGADE ELECTRONICS.



Assembly PI Approval W.XIA	Approved by JN BATOUR	Checked by A. FOSTER	Drawn by A.KING
Angle of Projection Third Angle	Units mm	Scale N/A	Released 08/08/23
Status RELEASED		Assembly Ref -	
Part No 7093		DW-2000TX-PC BE-004842-00-23	